



Askham Fields Lane, Askham Bryan, York

£650,000

Stephensons
estate agents & chartered surveyors

stephensons4property.co.uk

S

Est. 1871

Askham Fields Lane, York YO23 3LT

£650,000

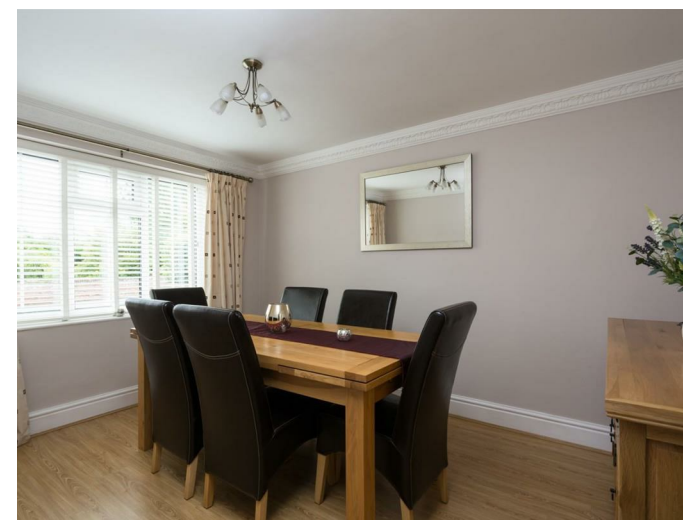
A beautifully maintained four-bedroom village home offering generous living space, landscaped gardens and countryside views, perfectly positioned for rural living with excellent commuter links.

This attractive and generously proportioned family home has been lovingly maintained and offers well-balanced accommodation arranged over two floors, complemented by a large detached garage and excellent external space.

The welcoming entrance hall leads through to a superb dual-aspect living room, a real highlight of the property, enjoying abundant natural light and delightful rear views across the garden and open countryside beyond. A separate dining room provides an ideal space for entertaining or family meals, while the breakfast kitchen with fitted appliances is well planned and perfectly suited to everyday living.

To the first floor, the property offers four well-proportioned bedrooms. The principal bedroom benefits from fitted wardrobes and a private en suite bathroom, while the remaining three bedrooms are served by a family shower room. Bedrooms 2 & 3 also benefit from built in wardrobes.

Externally, the property is approached via a large gravelled driveway with attractive walled boundaries, providing ample off-street parking. Timber gates lead through to a substantial



Tenure: Freehold
Broadband Coverage: Up to 1000* Mbps
download speed
EPC Rating: C - 72
Council Tax: F - City of York
Current Planning Permission: No current
planning permissions

Imagery Disclaimer: Some photographs and
videos within these sales particulars may have
been digitally enhanced or edited for marketing
purposes. They are intended to provide a
general representation of the property and
should not be relied upon as an exact depiction.

*Broadband speeds are predicted based on the
address entered. You should check with
broadband suppliers in your area to confirm your
maximum speed available.



detached garage, offering excellent storage or potential
workshop space. To the rear, the beautifully landscaped
garden features a patio area ideal for outdoor dining, along
with a well-maintained lawn and open views that enhance the
sense of space and tranquillity.

The property is located within the highly regarded village of
Askham Bryan, known for its strong community feel and range
of local amenities, including a village hall, public house,
childrens nursery, primary school (neighbouring Askham
Richard) and countryside walks on the doorstep. Despite its
peaceful rural setting, the property enjoys excellent
connectivity, with close proximity to the A64 and wider
motorway network, providing convenient access to York city
centre and beyond, all while sitting within this quite stunning
village.

Partners:

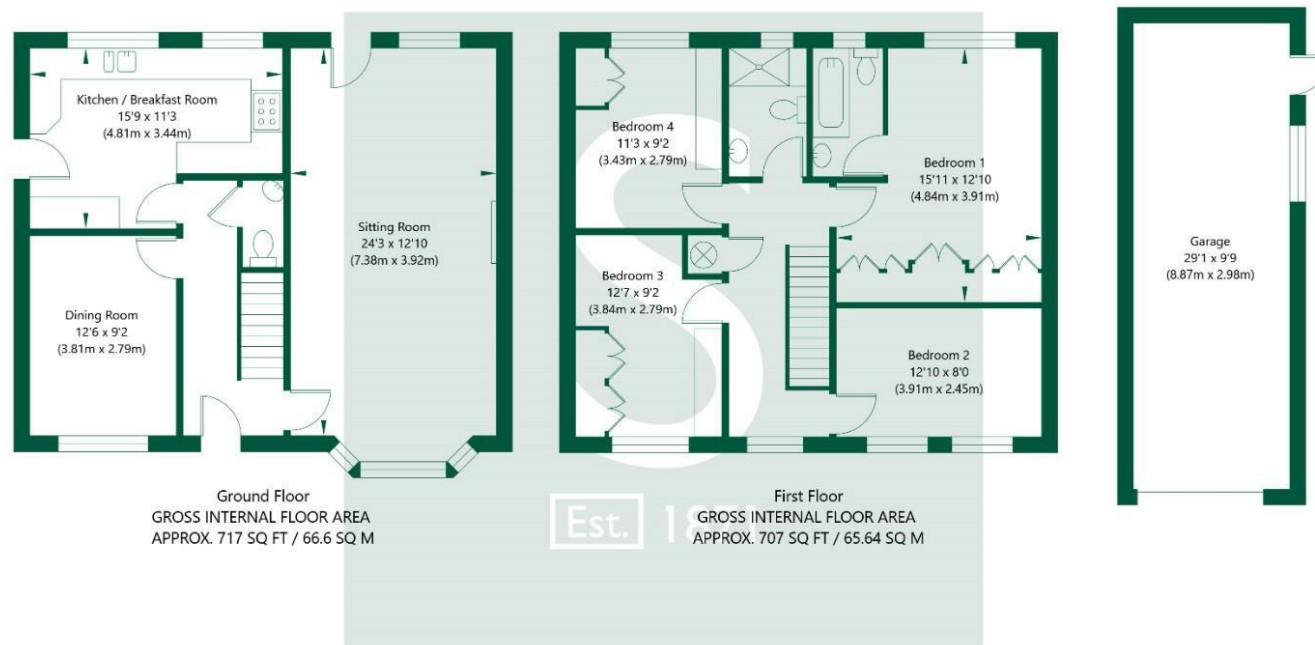
J F Stephenson MA (Cantab) FRICS FAAV
 I E Reynolds BSc (Est Man) FRICS
 R E F Stephenson BSc (Est Man) MRICS FAAV
 N J C Kay BA (Hons) pg. dip MRICS
 O J Newby MNAEA
 J E Reynolds BA (Hons) MRICS
 R L Cordingley BSc FRICS FAAV
 J C Drewniak BA (Hons)
 E G Newby MRICS
 T Brooks MNAEA

Associate Partners:

N Lawrence
 I Jarvis MNAEA

York: 01904 625533
 Boroughbridge: 01423 324324
 Easingwold: 01347 821145
 Selby: 01757 706707
 Haxby: 01904 809900

Askham Fields Lane, York, YO23 3LT



NOT TO SCALE - FOR ILLUSTRATIVE PURPOSES ONLY
 APPROXIMATE GROSS INTERNAL FLOOR AREA 1424 SQ FT / 132.24 SQ M - (Excluding Garage)
 All Measurements and fixtures including doors and windows are approximate and should be independently verified.
www.exposurepropertymarketing.com © 2021

